

**BANDO**

# INDUSTRIAL PRODUCT LINE PREVIEW



**PREMIUM QUALITY  
POWER TRANSMISSION BELTS**

S I N C E 1 9 0 6

# Industrial Power Transmission Products

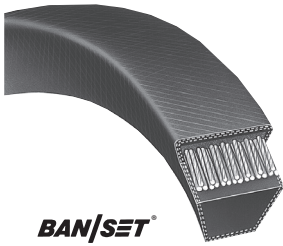
Bando's comprehensive line of premium quality power transmission belts provide the perfect solution to any drive application.

We're committed to giving our customers quality products, competitively priced, with a level of service and support that exceeds our customers' expectations.

We provide:

- Local availability from over 1,000 distributor locations in North America
- Problem-solving drive design assistance for new applications or the redesign of troublesome existing drives
- Local sales support and service from experienced field sales representatives
- Real-time interactive online stock availability and order entry

**BAN/SET**<sup>®</sup> System eliminates matching requirements



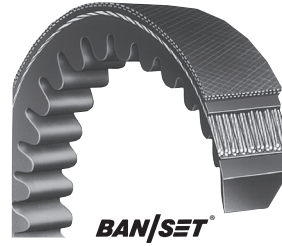
**Power King<sup>®</sup> Classical**  
(A, B, C, D, E)

Constructed of oil and heat resistant neoprene compound and high strength polyester cords. Designed to cut operating costs and reduce maintenance on multiple belt industrial drives.



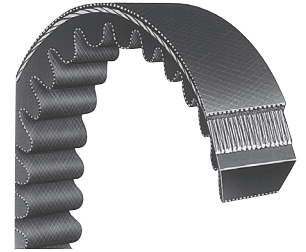
**Power Ace<sup>®</sup> Narrow**  
(3V, 5V, 8V)

Narrow section belts provide high horsepower ratings, allowing for: smaller sheaves, reduced weight, space, and cost.



**Power King<sup>®</sup> Cog**  
(AX, BX, CX)  
**Power Ace<sup>®</sup> Cog**  
(3VX, 5VX)

Energy efficient raw-edge molded cog belts run cooler and last longer. Can accommodate smaller diameter sheaves, reducing costly maintenance and downtime.



**Power Max<sup>®</sup> Variable Speed**  
(Wide Range of Sizes)

Precision molded cogs provide longitudinal flexibility and crosswise rigidity to reduce heat build up. Supplies precise control over a wide range of speed ratios.

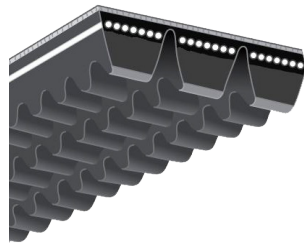


**Power King<sup>®</sup> Combo**  
(B, C, D)

**Power Ace<sup>®</sup> Combo**  
(3V, 5V, 8V)

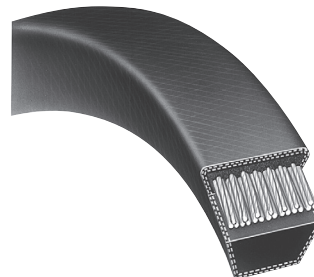
**Power Ace<sup>®</sup> Aramid Combo**  
(5VK, 8VK)

Stabilize problem drives where belts tend to flip over due to high shock loads. Built with a tough oil and heat resistant tie band.



**Power Ace<sup>®</sup> Cog Combo**  
(3VX, 5VX)

Combines the superior performance of a cog belt with the stability of banded construction to tackle difficult applications with small sheave diameters and high shock loads.



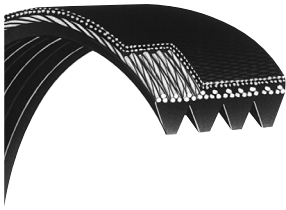
**Duraflex GL<sup>®</sup>**  
(2L, 3L, 4L, 5L)

Designed for light duty fractional horsepower drives to provide a long economical service life. Duraflex<sup>®</sup> GL is a mainstay in the HVAC industry. 2L section features a cogged polyurethane construction.



**Double V**  
(AA, BB, CC)

Transmits power from both sides of the belt on reverse bend serpentine drives. Dual direction flexibility provides long life on tough applications such as agricultural and textile machinery.



### Rib Ace® V-Ribbed

(J, PK, L, M)

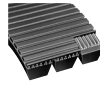
Superior flexibility of this thin multiple V-ribbed belt allows for use on smaller, lighter sheaves, resulting in reduced drive costs. Oil and heat resistant neoprene body with strong tensile cords provide long service life.



### BanFlex®

(3M, 5M, 7M, 11M)

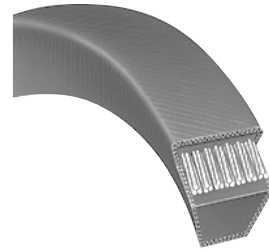
Designed specifically for ultra high speed drives. The precision molded seamless construction of BanFlex® supplies vibration free operation at speeds in excess of 10,000 rpm.



### BanFlex® Combo

(5MS, 7MS, 11MS)

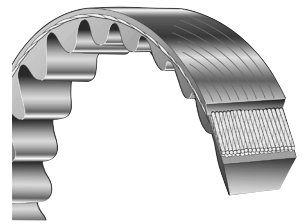
Banded construction eliminates belt turnover, while the ribbed back provides superior flexibility and maintains lateral stability, assuring equal load distribution.



### Ultrapower AG®

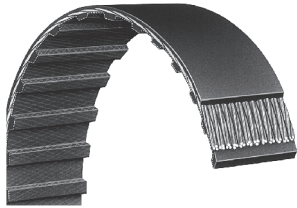
(KC)

Available in A and B cross sections, the KC belt is built with a strong aramid cord and a bare canvas cover to allow for clutching applications found in the lawn care industry.



### Duraflex® VC (Cogged) DC (Double Cogged)

The precision molded polyurethane construction provides exceptional dimensional stability and high coefficient of friction to minimize slippage and the resulting black dust of conventional neoprene belts.



### Synchro-Link® Neoprene Timing Belts

(ARPM-MXL, XL, L, H, XH, XXH)

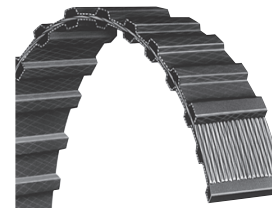
Smooth belt tooth mesh with pulley grooves provides precise, non-slip performance on synchronous drives. Design versatility and efficiency make synchronous drives an attractive alternative to gears and chain.



### Synchro-Link® Polyurethane Timing Belts

(ARPM-XL, L, H)  
(Metric-T2.5, T5, T10, AT5, AT10)

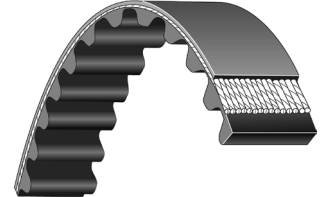
Ideal for applications requiring high oil and ozone resistance. These belts also perform well in clean room environments. Quiet operation also makes them ideal for appliance and office equipment drives.



### Synchro-Link® Double-Sided Timing Belts

(Neoprene: ARPM-DXL, DL, DH)  
(Polyurethane: ARPM-DMXL, DXL  
Metric-DT5, DT10)

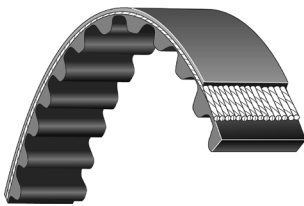
Designed for serpentine synchronous drives. These belts provide smooth, precise performance under exacting drive conditions. Neoprene construction features canvas tooth facing on both sides.



### Synchro-Link® HT Timing Belts

(3M, 5M, 8M, 14M)  
(HT Profile)

Curvilinear tooth design improves stress distribution to provide high horsepower ratings over a wide speed range and high torque transmission at low speeds.



### Synchro-Link® STS Timing Belts

(Neoprene-Metric)  
(S1.5M, S2M, S3M, S4.5M, S5M)

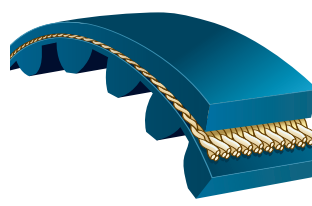
Unique modified curvilinear tooth form enables the STS belt to operate quieter and to transmit greater loads than like-sized drives having the standard high torque tooth profile.



### Synchro-Link® HPS Timing Belts

(HPS5M, HPS8M, HPS14M)  
(STS Profile)

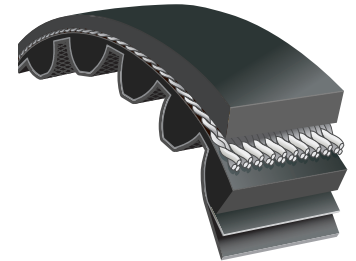
Anticipating the demand for energy savings and higher horsepower transmission, Bando developed our High Performance STS belt, utilizing our time proven technology and experience.



### Synchro-Link® KPS II Timing Belts

(KPS8M, KPS14M)  
(STS Profile)

Utilizing high modulus aramid cords and the unique blue polyurethane body, the KPS II is the belt of choice for applications requiring exceptional power transmission capabilities on lower speed high torque drives.



### Ceptor-X®

(S8M C-X, S14M C-X)  
(STS Profile)

Low noise results from narrower belt width (approximately 20%) compared to HP-STs. The use of strong carbon cords and wear resistant canvas surface offers minimal belt stretch, tooth wear, and increased durability for a longer service life.

# THE CUSTOMER EXPERIENCE... IT'S OUR RESPONSIBILITY

